

# Gasoline Consumption, VMT and Price

## **Does Price Matter?**

David R. Ellis, Ph.D.  
Research Scientist  
Texas Transportation Institute  
The Texas A&M University System  
College Station, Texas 77843

**Are we driving less?**

**Are we driving less?**

**Yes.**

**Are we driving less?**

**Yes.**

**How much less are we driving?**

**Are we driving less?**

**Yes.**

**How much less are we driving?**

**62.1 Billion miles less comparing  
Jan-Aug 2007 with Jan-Aug 2008!**

**62.1 billion miles**

**divided by**

**305 million people**

**divided by**

**244 days**

**.83 fewer miles per  
day per person**

**.83 fewer miles per  
day per person**

**2.16 fewer miles per  
day per household**

**.83** fewer miles per  
day per person

**2.16** fewer miles per  
day per household

**\$0.45** saved per  
day per household

Estimated Gasoline Consumption in Texas:  
2007 and 2008 (in 000's gallons)

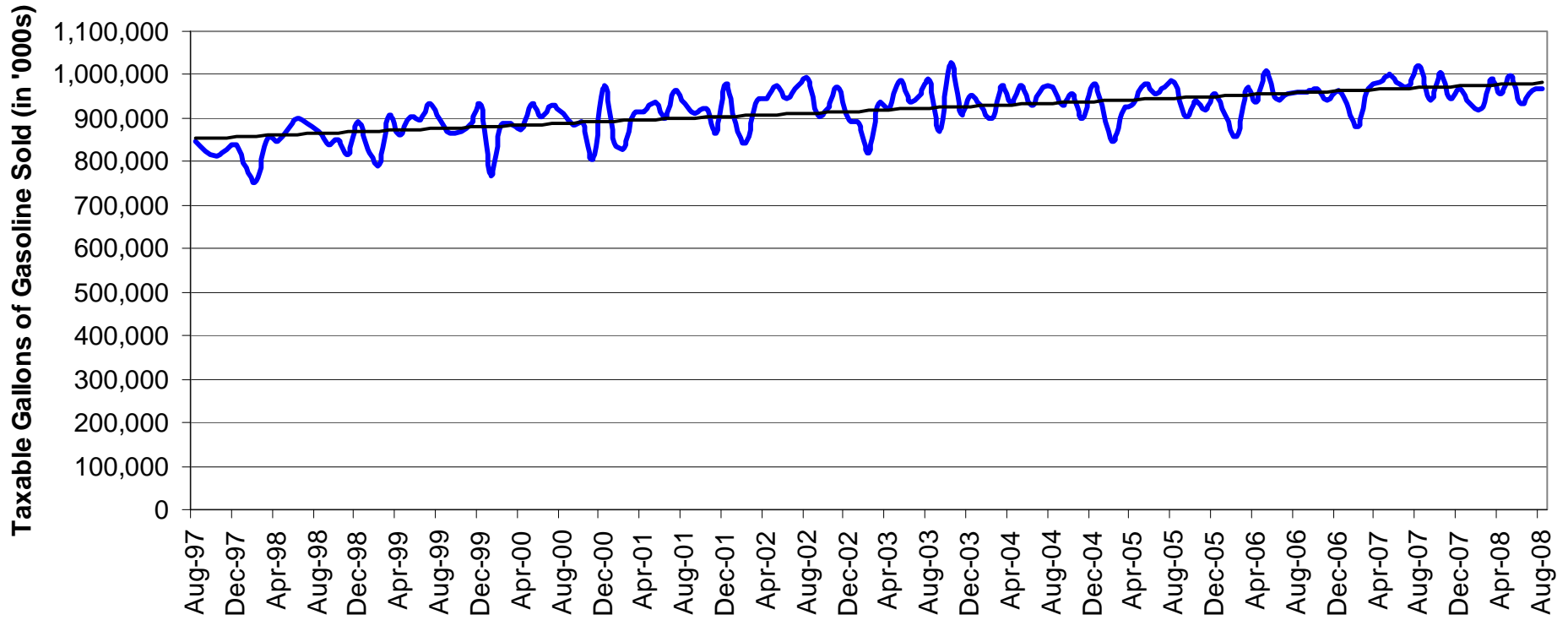
	2007	2008	Change	Pct. Change
January	923,150	935,125	11,975	1.3%
February	880,240	921,775	41,535	4.7%
March	968,185	990,235	22,050	2.3%
April	982,550	956,320	-26,230	-2.7%
May	1,002,295	997,945	-4,350	-0.4%
June	978,205	934,965	-43,240	-4.4%
July	974,255	962,615	-11,640	-1.2%
August	1,021,075	968,190	-52,885	-5.2%

## Estimated Per Capita Gasoline Consumption in Texas: 2007 and 2008 (in 000's gallons)

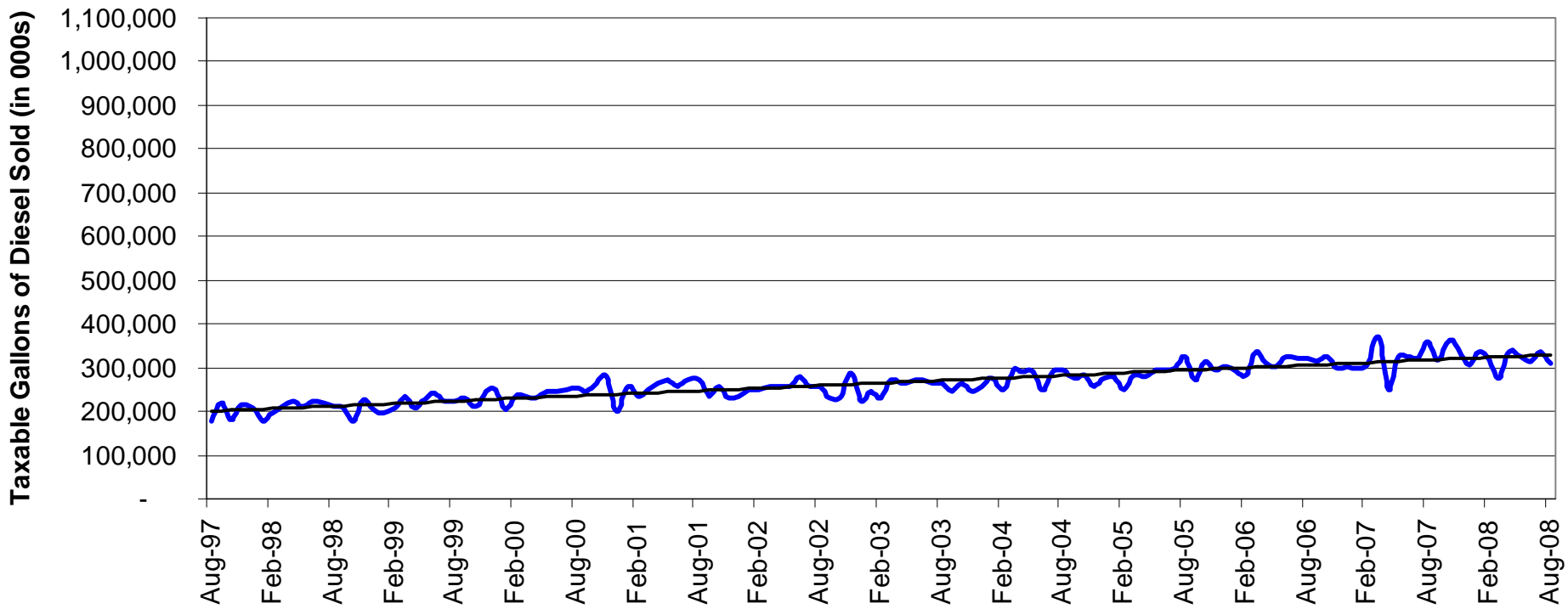
	2007	2008	Change	Pct. Change
January	38.7	38.8	0.1	0.2%
February	36.9	38.2	1.3	3.4%
March	40.6	41.0	0.4	0.9%
April	41.2	39.5	-1.7	-4.0%
May	42.0	41.2	-0.8	-1.9%
June	40.9	38.5	-2.4	-5.9%
July	40.8	39.6	-1.2	-2.8%
August	42.7	39.8	-2.9	-6.7%

...about 7.2 gallons per person  
from January to August

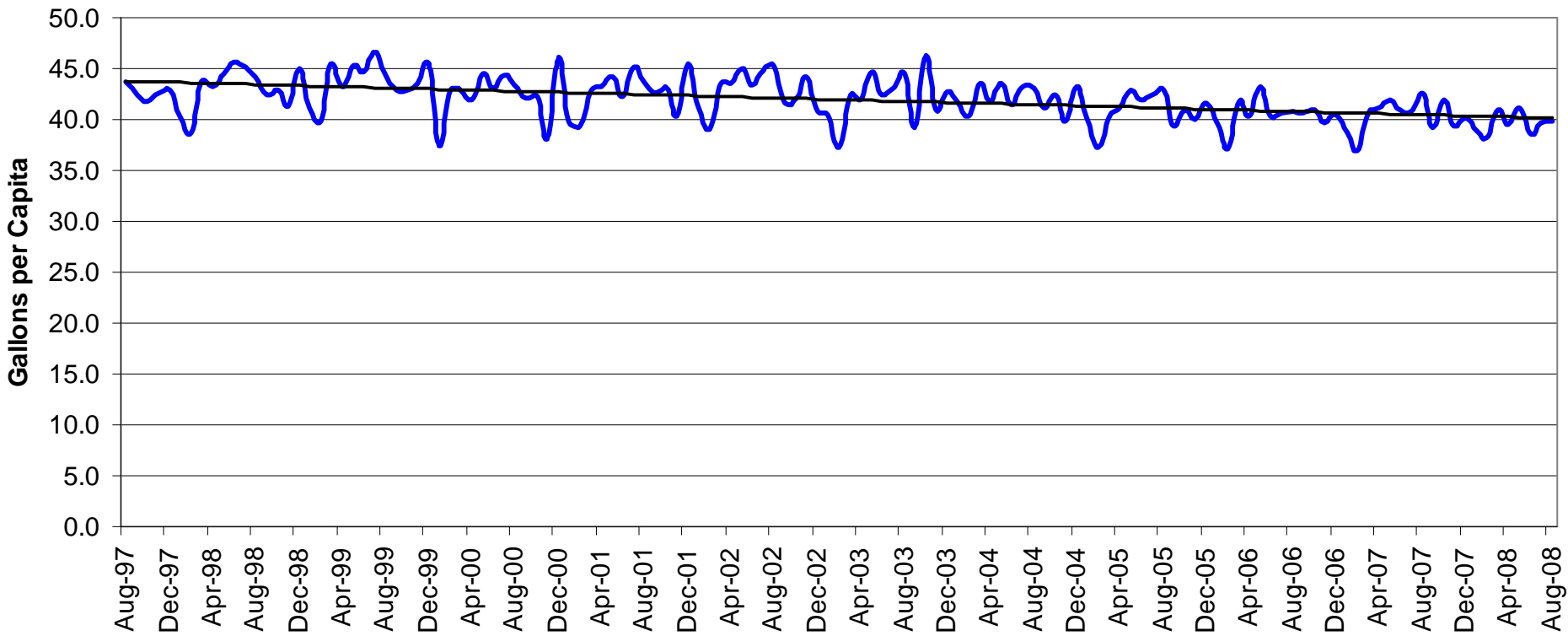
**Chart 1: Gallons of Taxable Gasoline Sold (in '000s):  
August 1997 through August 2008**



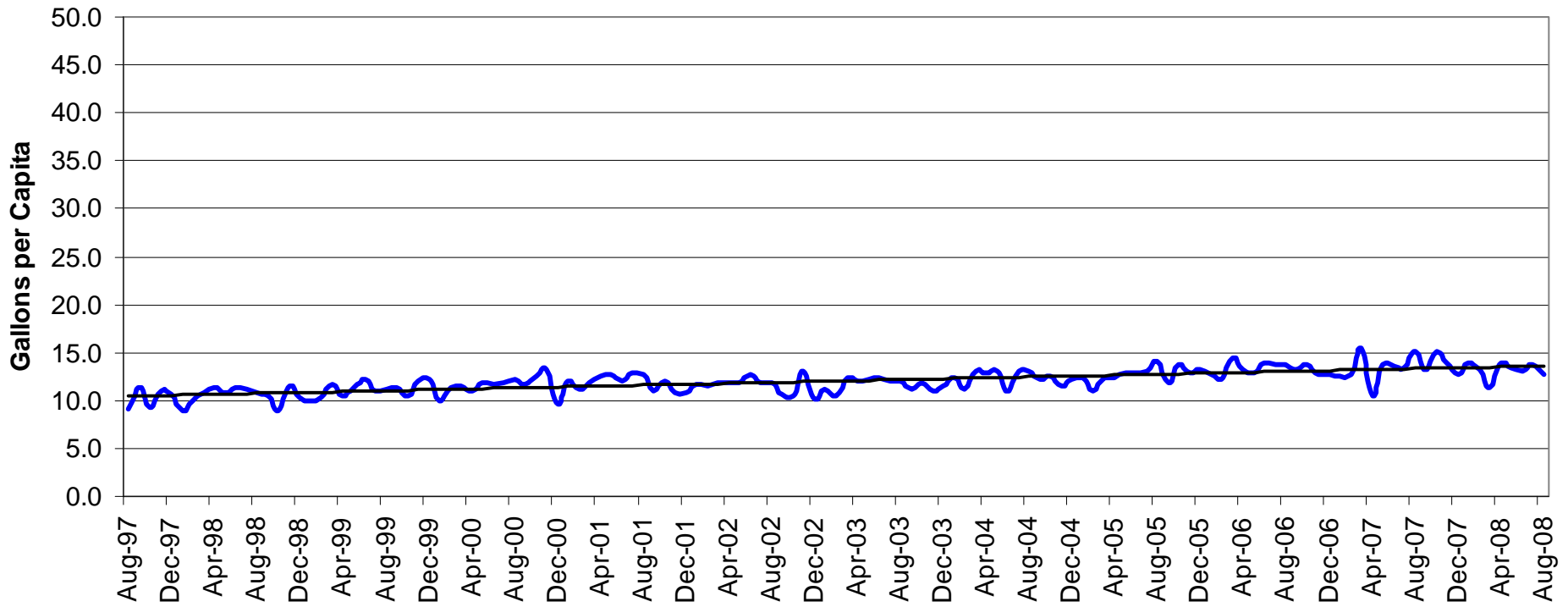
**Chart 2: Gallons of Taxable Diesel Sold (in 000s)  
August 1997 through August 2008**



**Chart 3: Estimated Texas Gasoline Consumption per Capita:  
August 1997 through August 2008**

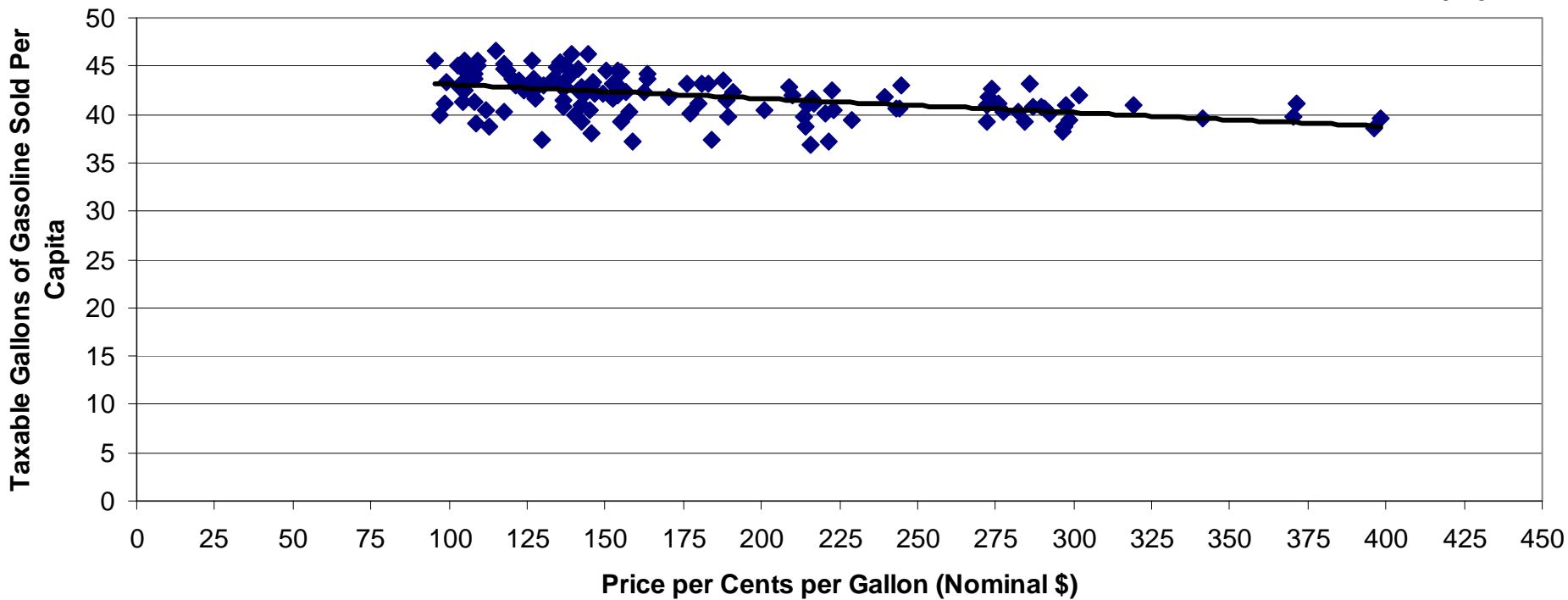


**Chart 4: Estimated Texas Diesel Consumption per Capita: August 1997 through August 2008**



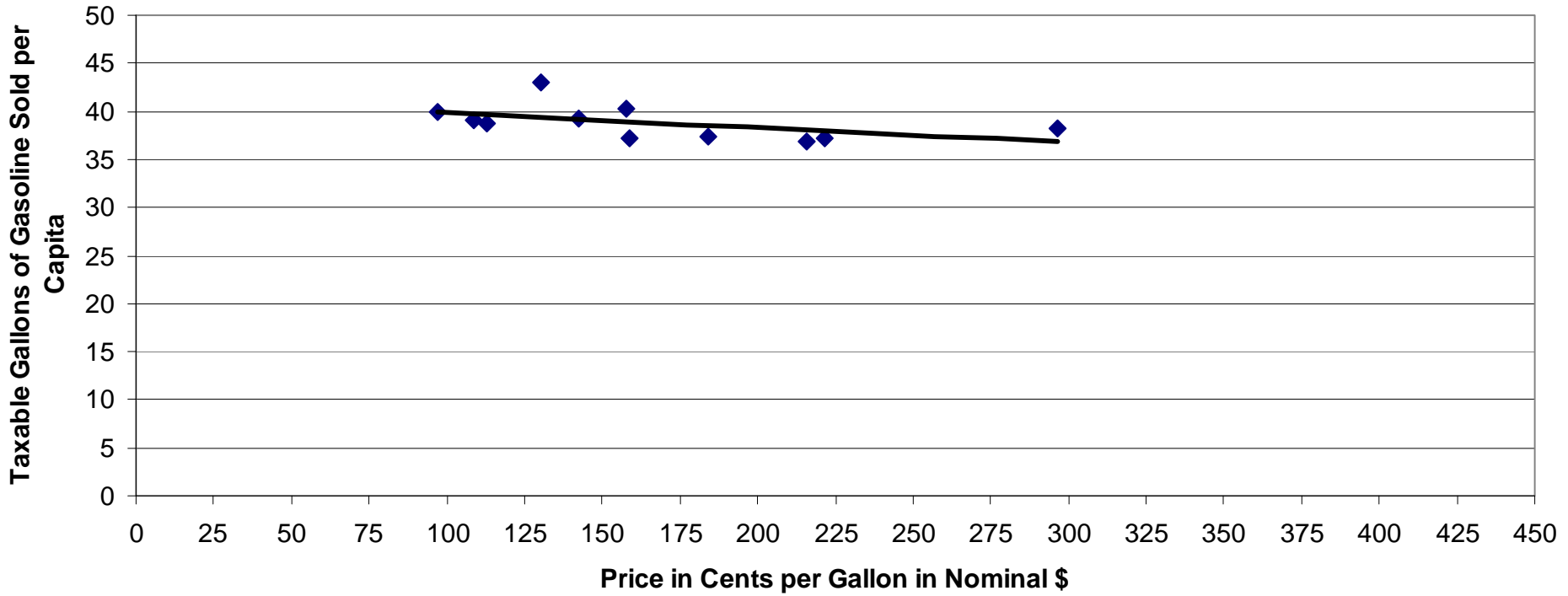
**Chart 5: All Months, Gasoline (August 1997 through August 2008)**  
**Nominal Dollars**

$y = -0.01x + 44.57$   
 $R^2 = 0.23$



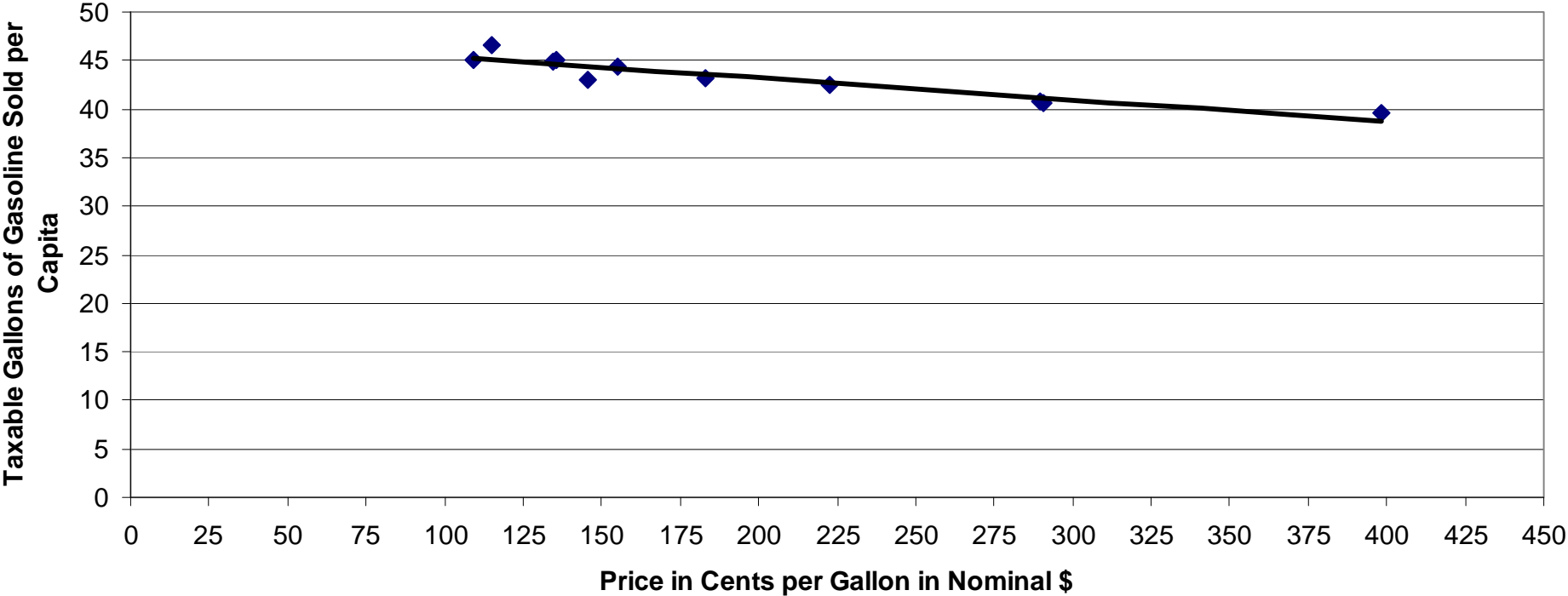
**Chart 6: February Gasoline - Nominal \$  
1998 through 2008**

$y = -0.02x + 41.32$   
 $R^2 = 0.25$

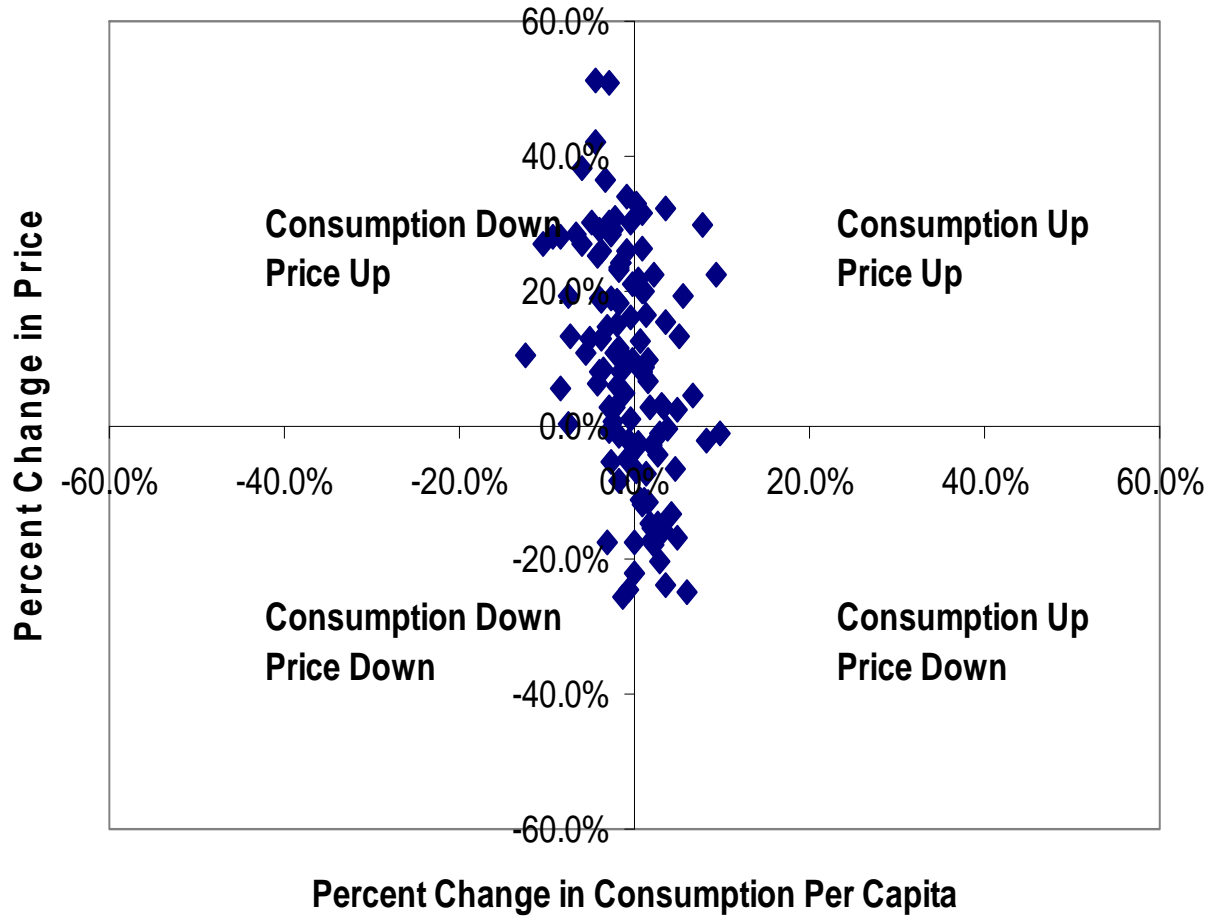


**Chart 7: July Gasoline - Nominal \$  
1998 through 2008**

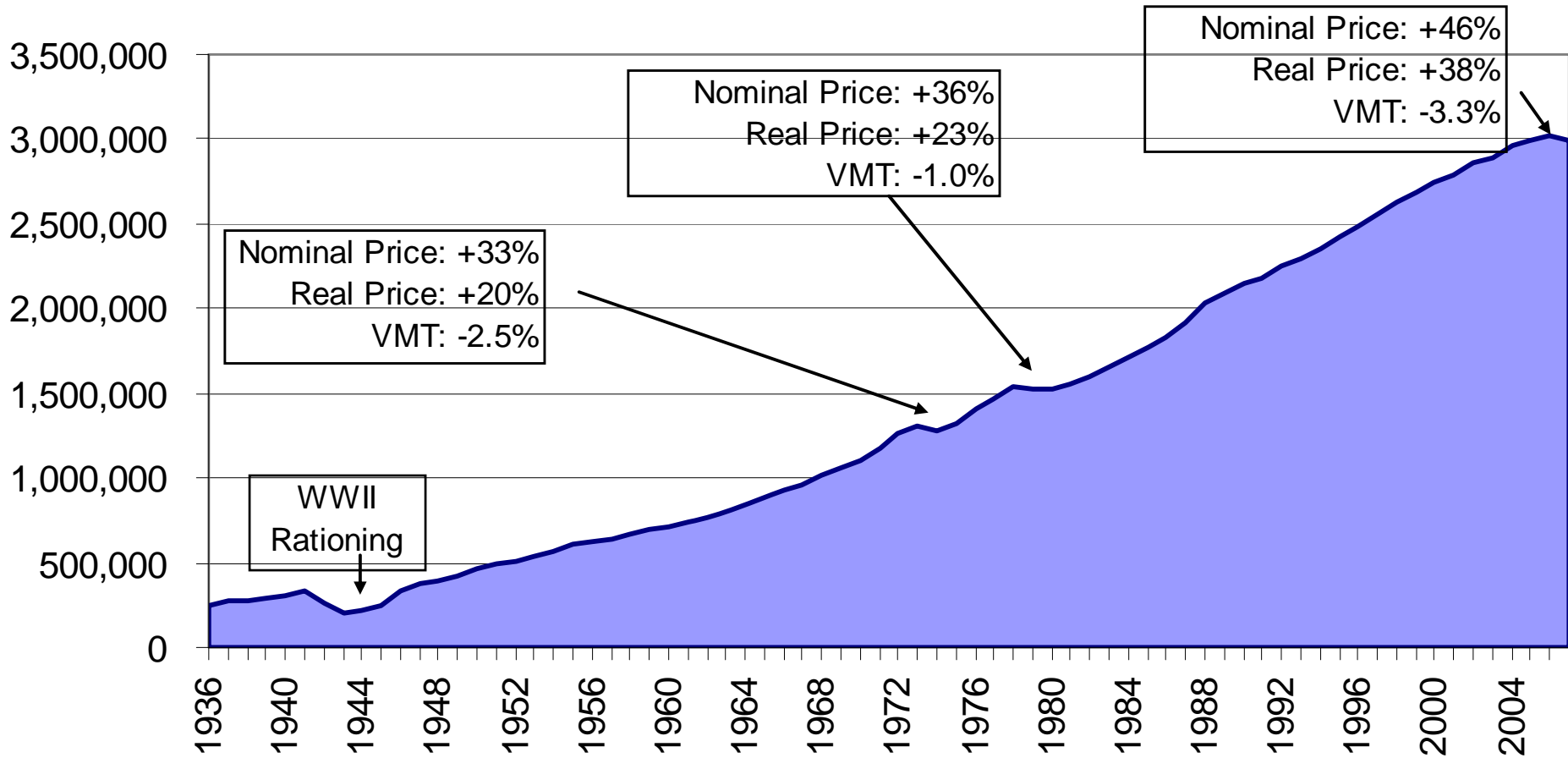
$y = -0.02x + 47.71$   
 $R^2 = 0.88$



**Chart 8: Year-Over-Year Percent Change in Consumption of Gasoline Per Capita Versus Year-Over-Year in Percent Change in Gasoline Price in Texas (All Months)**



**Chart 9: Vehicle Miles Traveled in the United States (in millions):  
1936 through 2008**  
(2007 VMT is estimated. 2008 VMT is based on data through August 2008.)  
(Source: Federal Highway Administration)



David Ellis

[d-ellis@tamu.edu](mailto:d-ellis@tamu.edu)

979-845-6165