

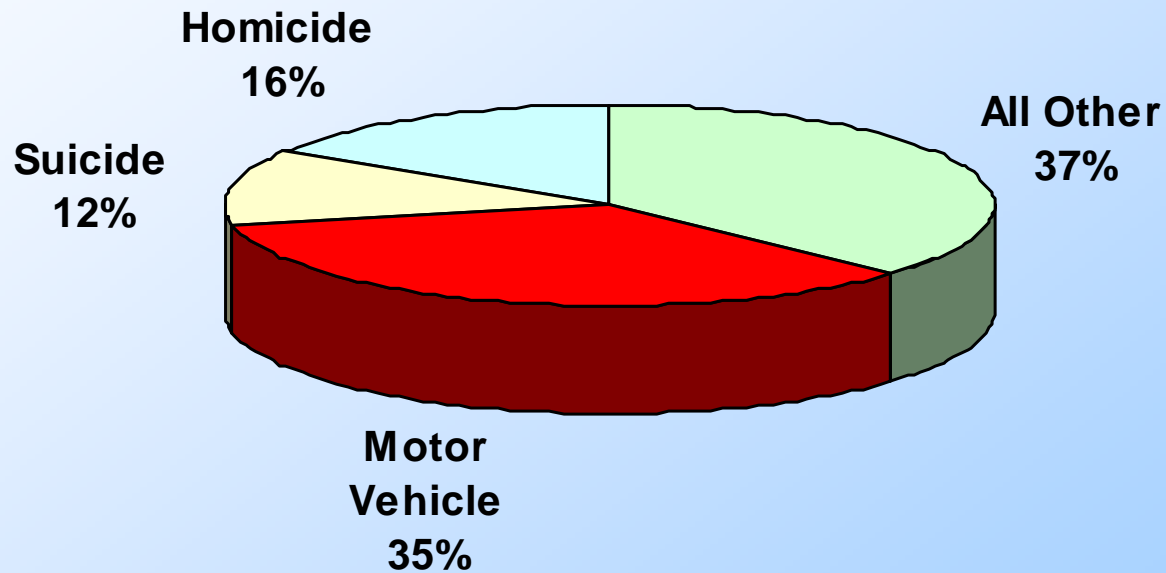
# Parental Role in Novice Driver Education and Training

**Val Pezoldt**

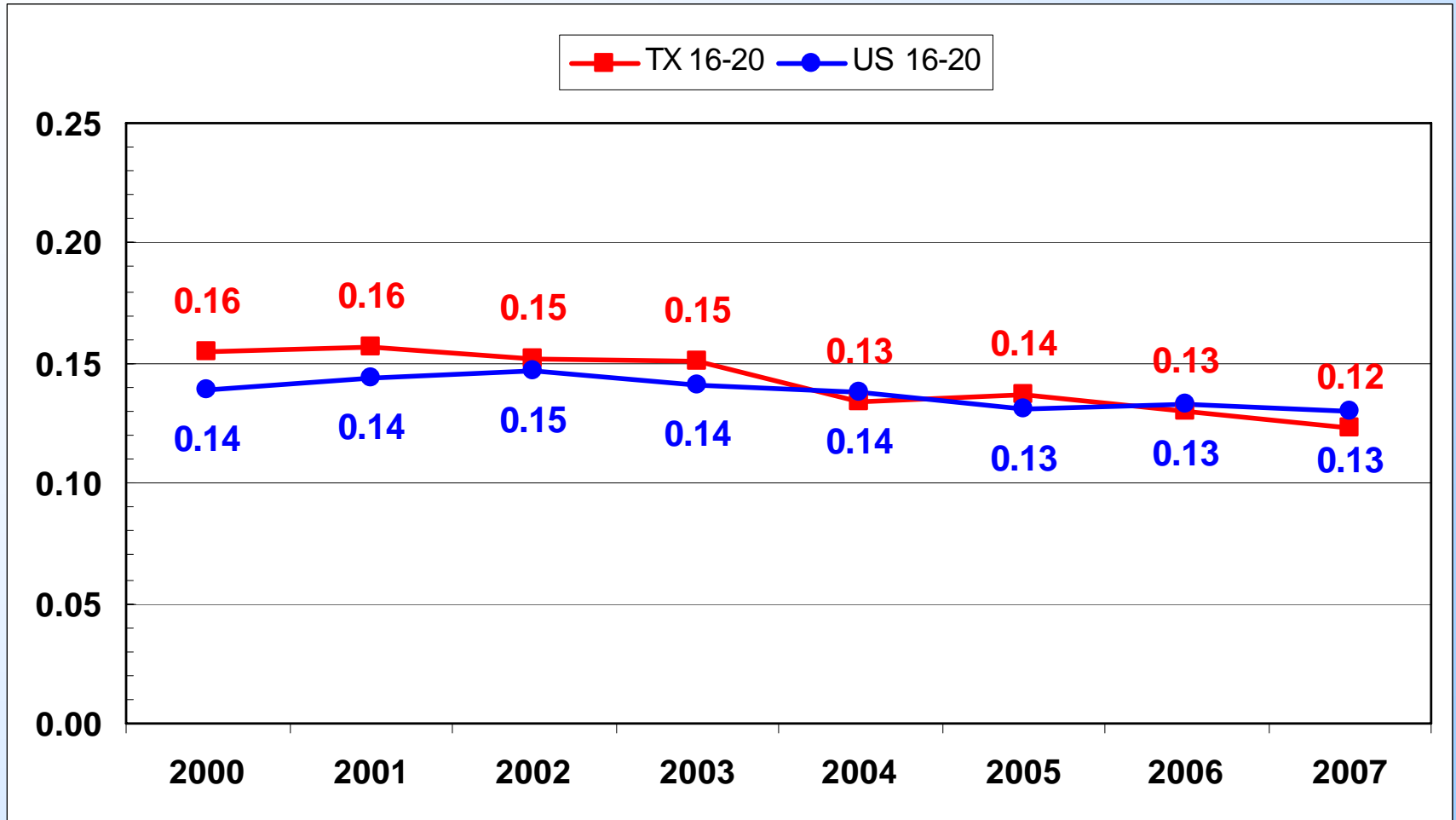
**Center for Transportation Safety  
Texas Transportation Institute**

**2008 Traffic Safety Conference  
November 17-19, 2008  
Houston, Texas**

# 15-20 Year-old Deaths in US



# Proportion of 16-20 Year-old Crash Deaths



“The involvement of the parent/guardian/mentor in the driver education program is crucial to the success of the program.”

- From: *Traffic Safety Education Life Long Learning Process Recommendations on the Delivery of Driver Education* rev 2002.

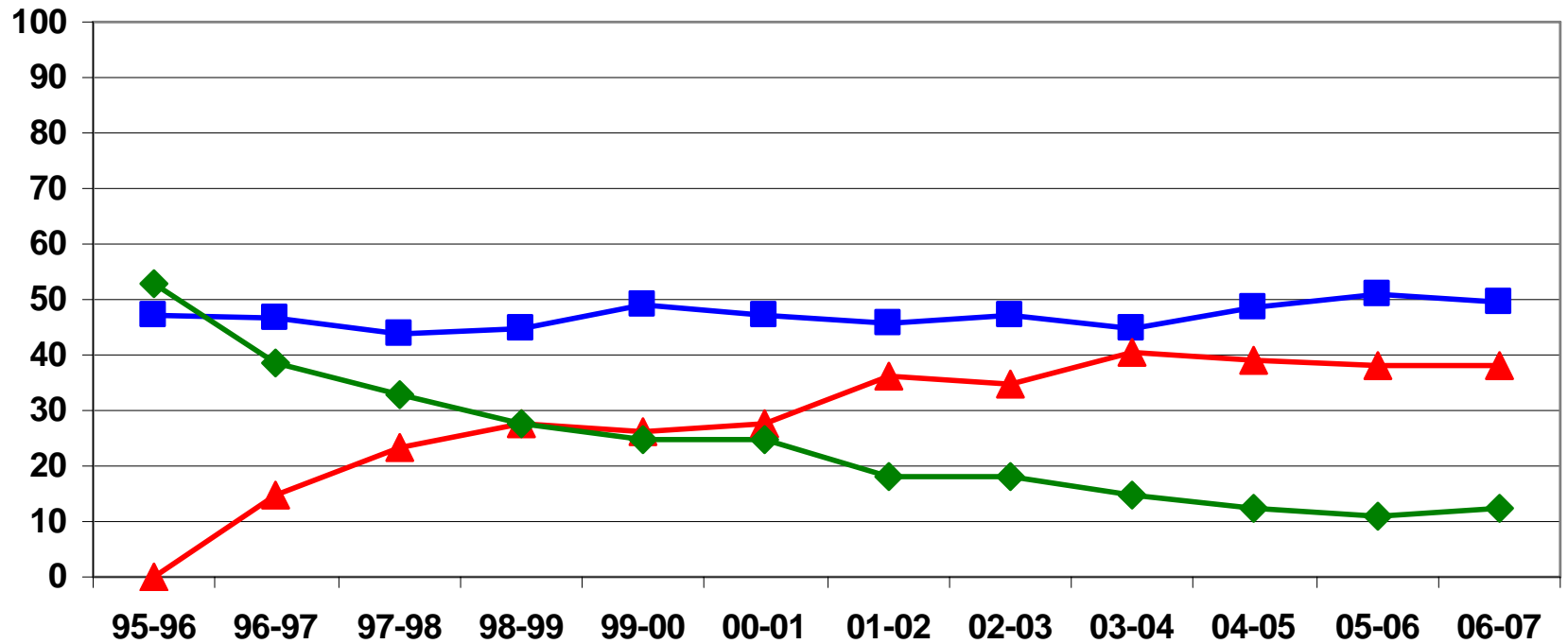
# What is Parent's Role?

- Role Model ✓
- Rule Setter & Enforcer ✓
- Provider of Supervised Practice ✓
- Informal Tutor ✓
- Formal Teacher ?

Since 1997 the “Parent Taught Driver Education Program” in Texas has had same status as certified/ licensed Public & Commercial driving school instruction.

## Percent of DE Certificates Sold by Mode

Commercial Parent-taught Public school



# Basic Evaluation Questions

1. Differences in attitudes, knowledge and skills?
2. Differences in post-licensing crash and citation experience?

# Focus Groups



# Young Driver Survey

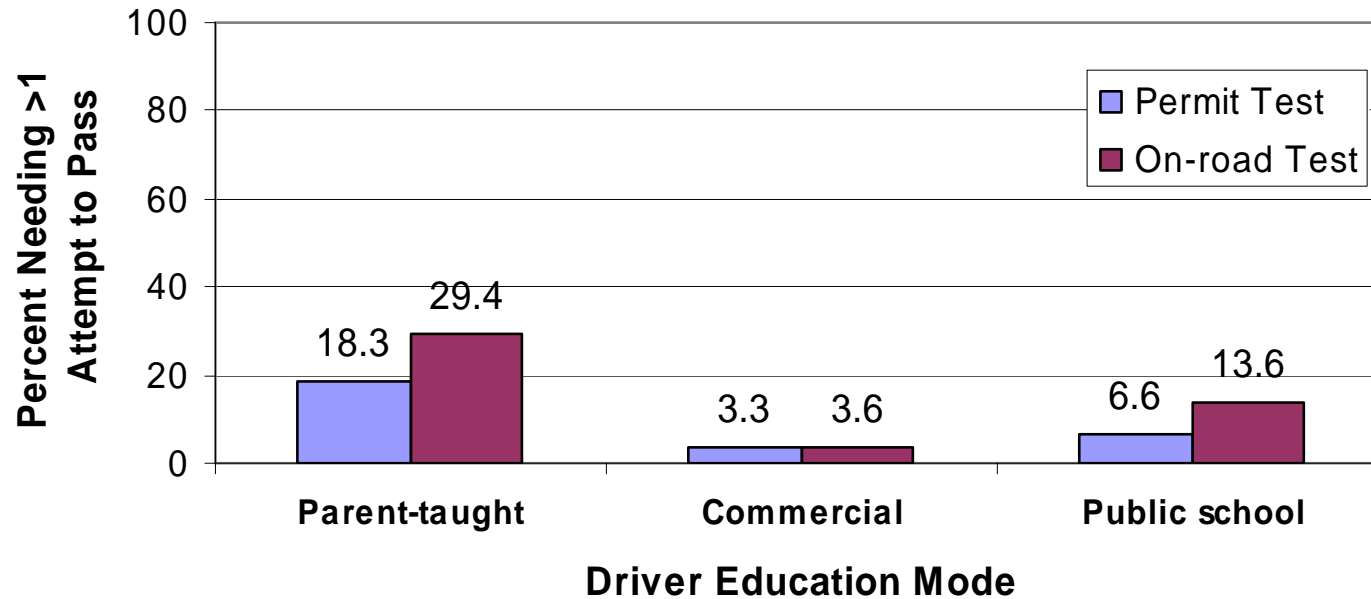


Dear Texas Driver,

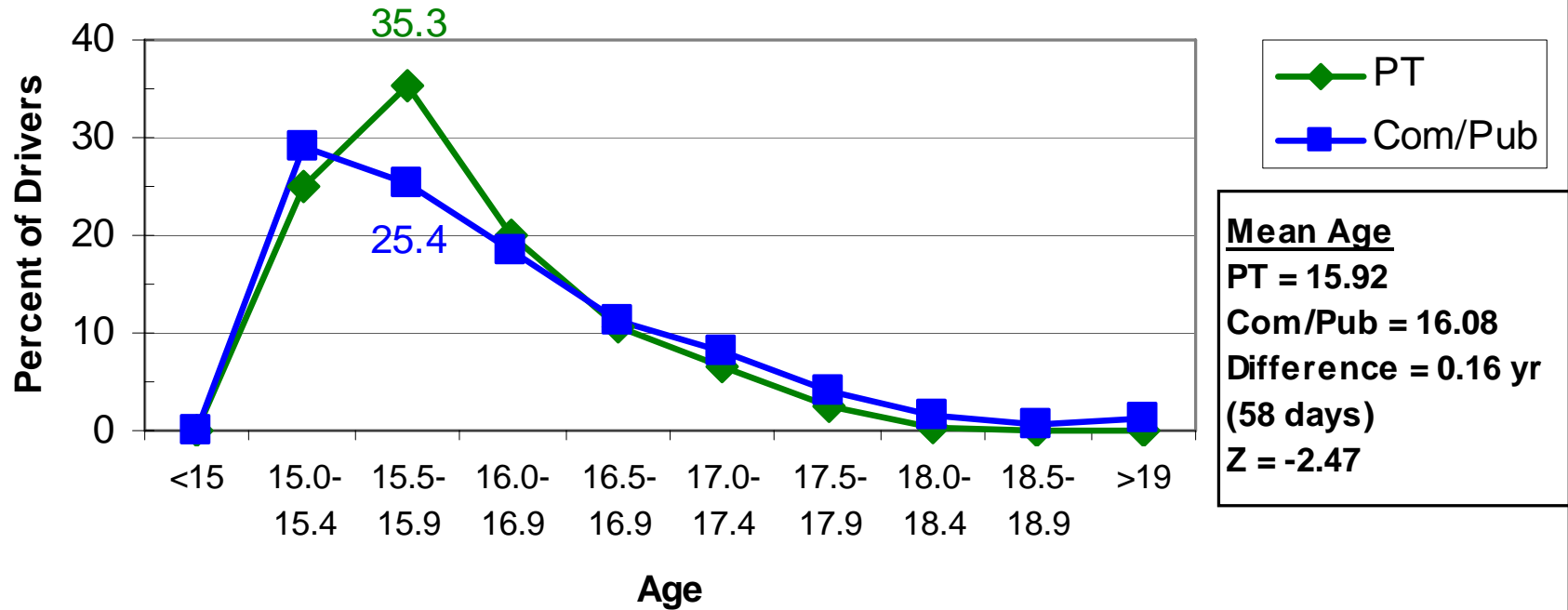
You are invited to participate in a survey of your opinions about driver education and your driving experiences and attitudes. The Texas Transportation Institute at Texas A&M University is conducting a survey of drivers who are taking or have completed a driver education course since 2003. The information you share with us will be used to evaluate driver education in Texas and to identify both the good and bad driving experiences young people have had.

In Texas, there are three different ways to take driver education: at your school, at a commercial driving school, or from parents, grandparents or guardians under the Texas Parent Taught Driver Education

## Self-reported Performance on Instructional Permit Test and DPS On-road Test: Post-GDL



### Age at date of original driver record by DE mode: Post-GDL



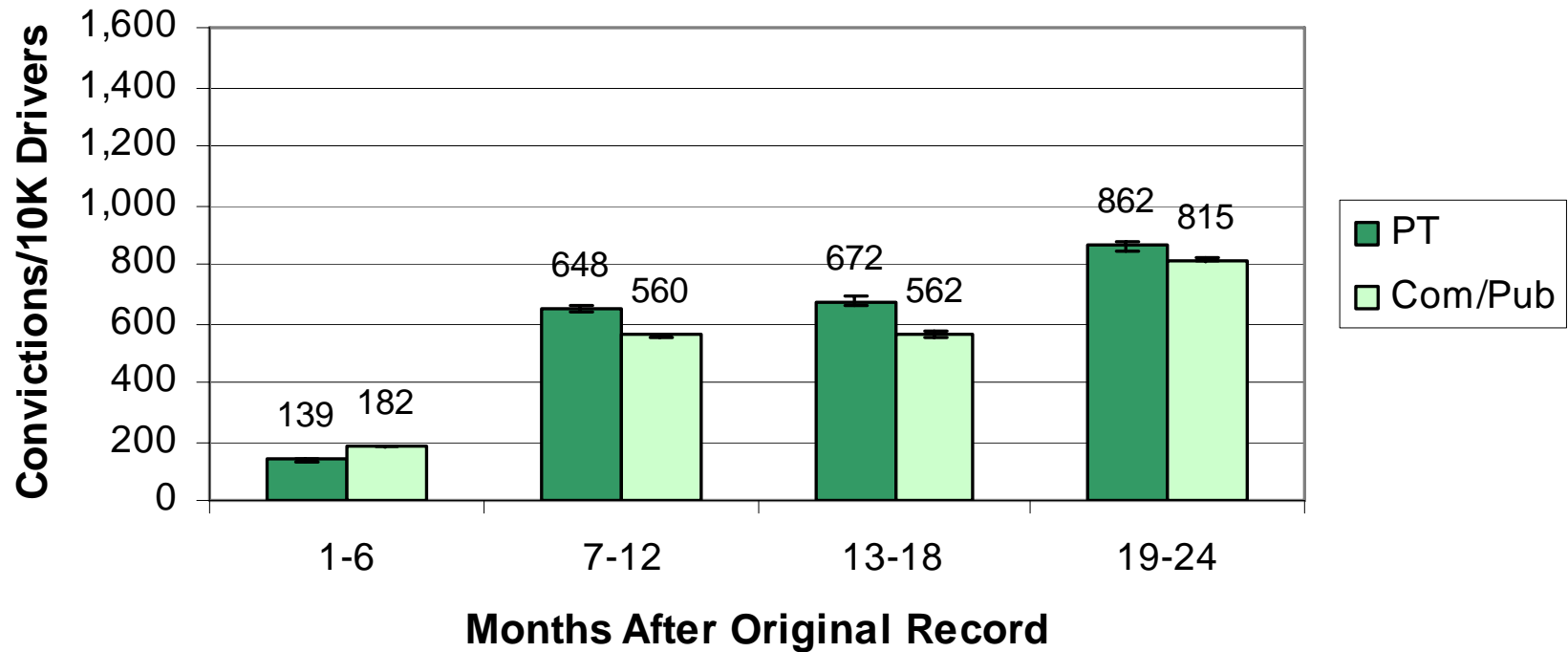
# Analysis of Citation & Crash Data



# Conviction Groups

1. Speeding over the limit	8. Other moving violations
2. Racing/excessive acceleration	9. Alcohol & drug violations
3. Other speed-related violations	10. Negligent/anti-social violations
4. Red light/stop sign violation	11. Driver license violations/No license
5. Disregard other traffic signs, signals, markings	12. Other DL violations (commercial)
6. Failure to yield right of way	13. Mandated driving safety course/program (excludes alcohol related courses that are included in conviction group 9)
7. Improper signal/fail to signal	14. Miscellaneous violations

## All convictions as a function of driver education mode: Post-GDL



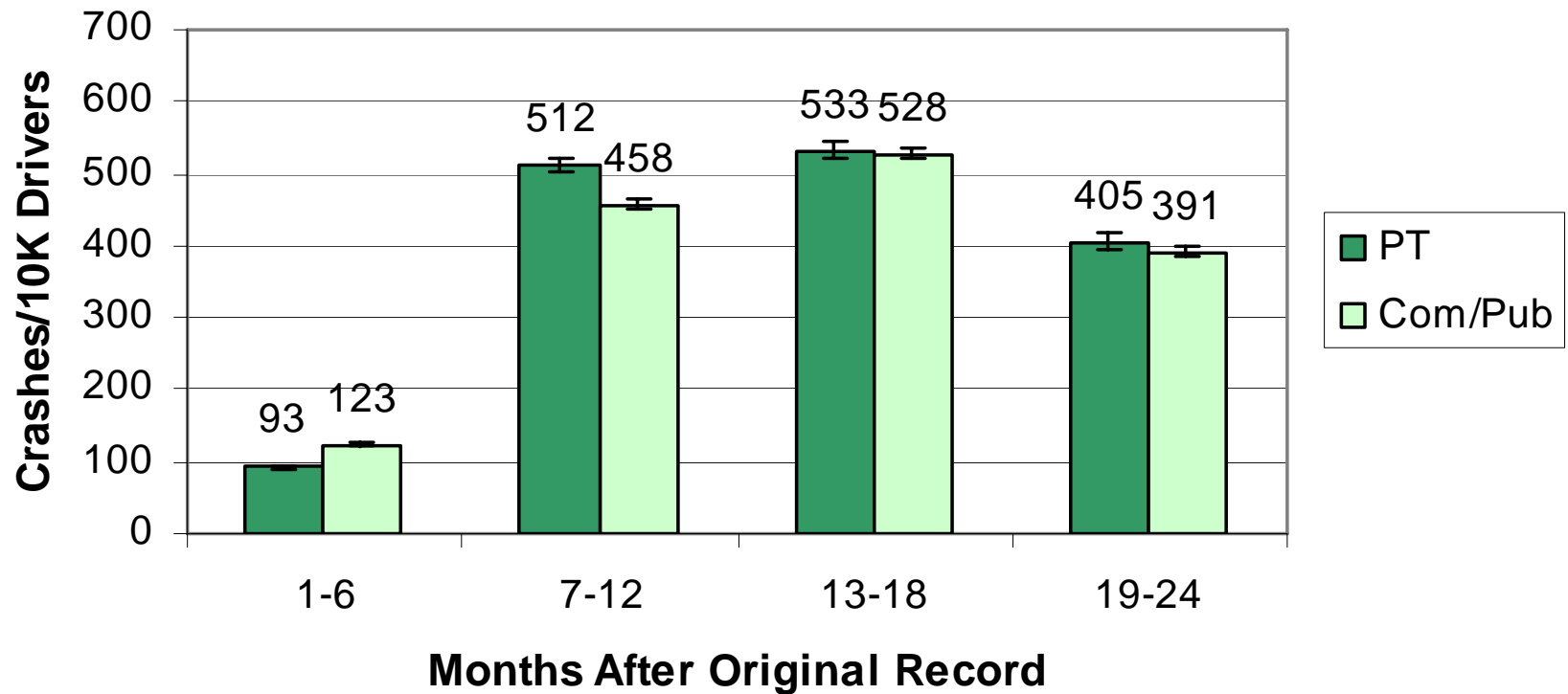
# Convictions > for Com/Pub during 1<sup>st</sup> six months driving

<b>1. Speeding over the limit</b>	<b>8. Other moving violations</b>
2. Racing/excessive acceleration	9. Alcohol & drug violations
<b>3. Other speed-related violations</b>	<b>10. Negligent/anti-social violations</b>
<b>4. Red light/stop sign violation</b>	11. Driver license violations/No license
<b>5. Disregard other traffic signs, signals, markings</b>	12. Other DL violations (commercial)
<b>6. Failure to yield right of way</b>	<b>13. Mandated driving safety course/program (excludes alcohol related courses that are included in conviction group 9)</b>
7. Improper signal/fail to signal	14. Miscellaneous violations

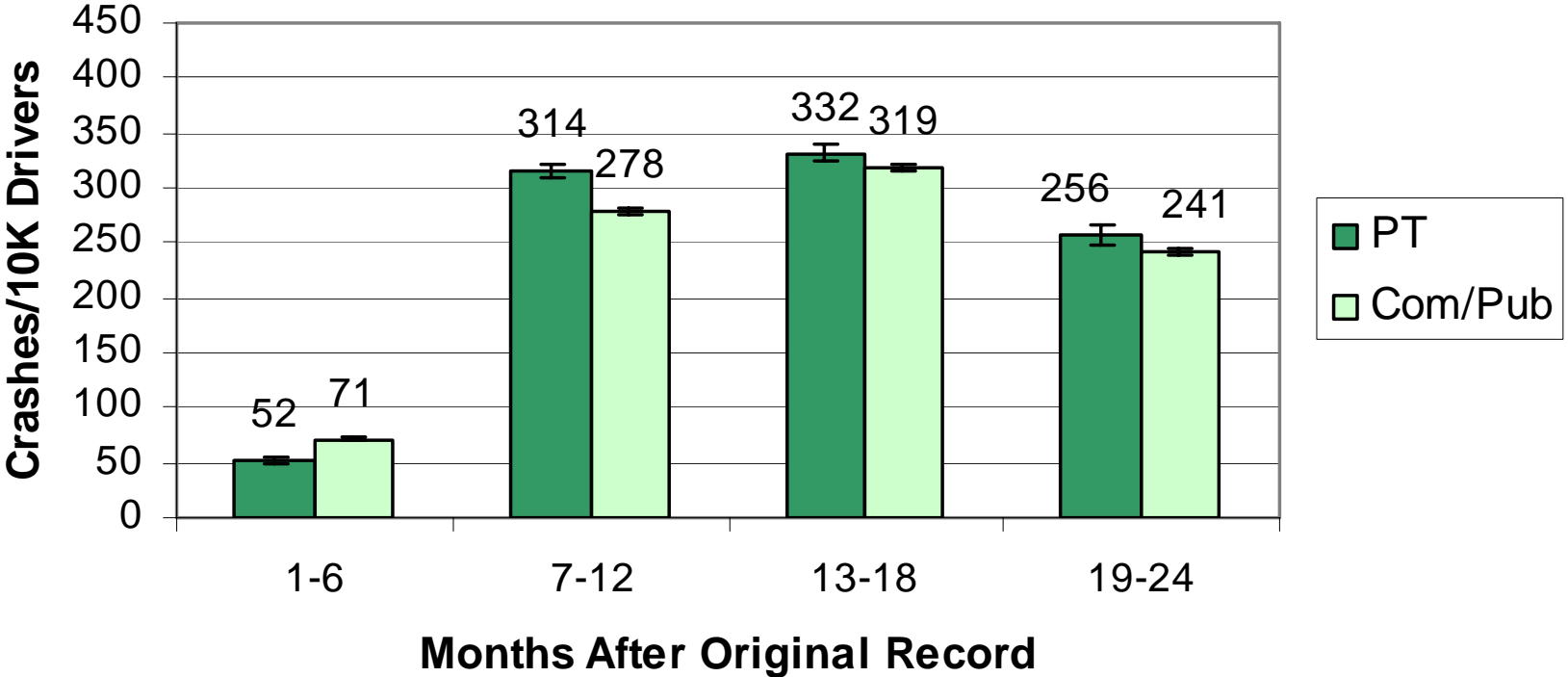
# Convictions > for Parent-taught during at least 1 of 3 six-month driving periods after most supervision

1. <b>Speeding over the limit (1)</b>	8. <b>Other moving violations</b>
2. Racing/excessive acceleration	9. <b>Alcohol &amp; drug violations (1)</b>
3. Other speed-related violations	10. Negligent/anti-social violations
4. Red light/stop sign violation	11. Driver license violations/No license
5. Disregard other traffic signs, signals, markings	12. Other DL violations (commercial)
6. <b>Failure to yield right of way (3)</b>	13. <b>Mandated driving safety (3) course/program (excludes alcohol related courses that are included in conviction Group 9)</b>
7. Improper signal/fail to signal	14. Miscellaneous violations

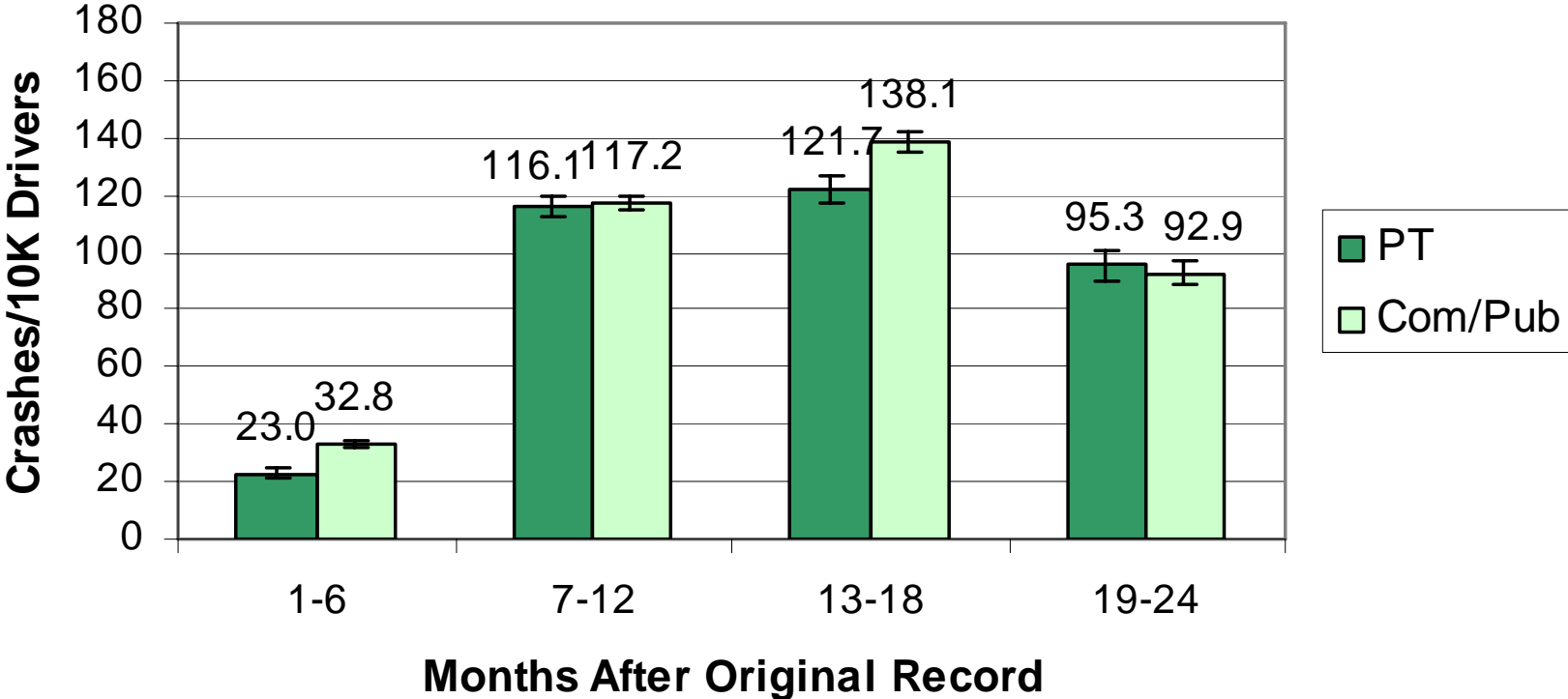
## All crashes as a function of driver education mode: Post-GDL



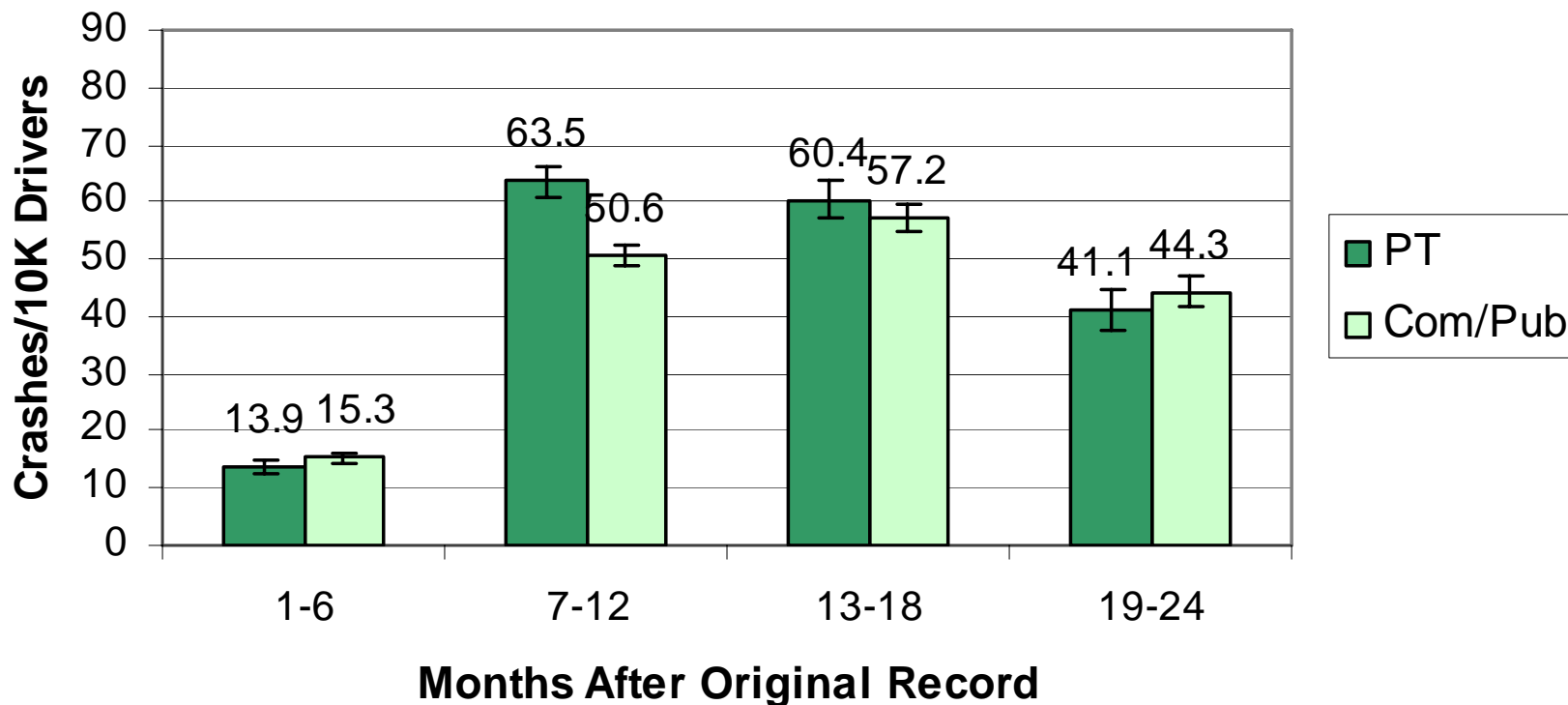
# Non-injury crashes as a function of driver education mode: Post-GDL



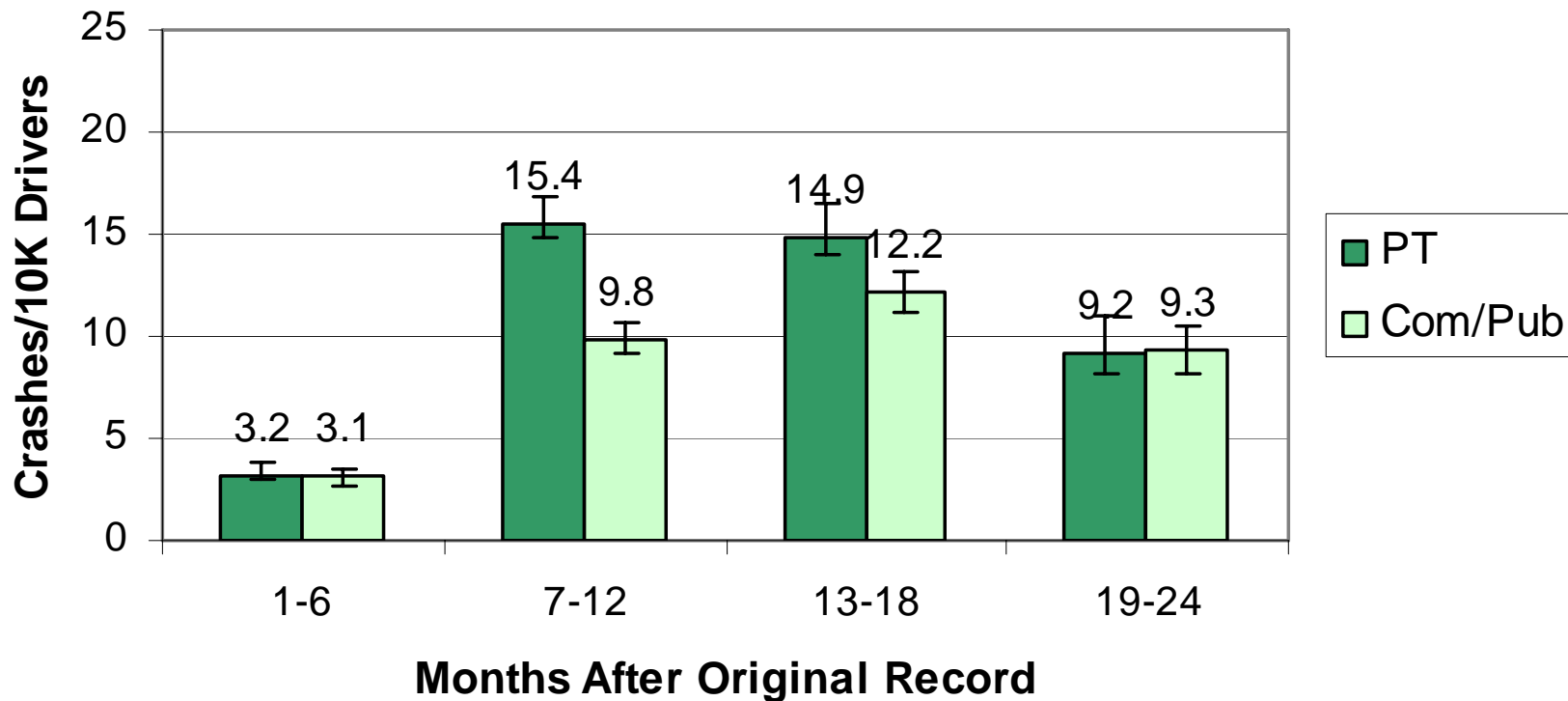
# Possible injury crashes as a function of driver education mode: Post-GDL



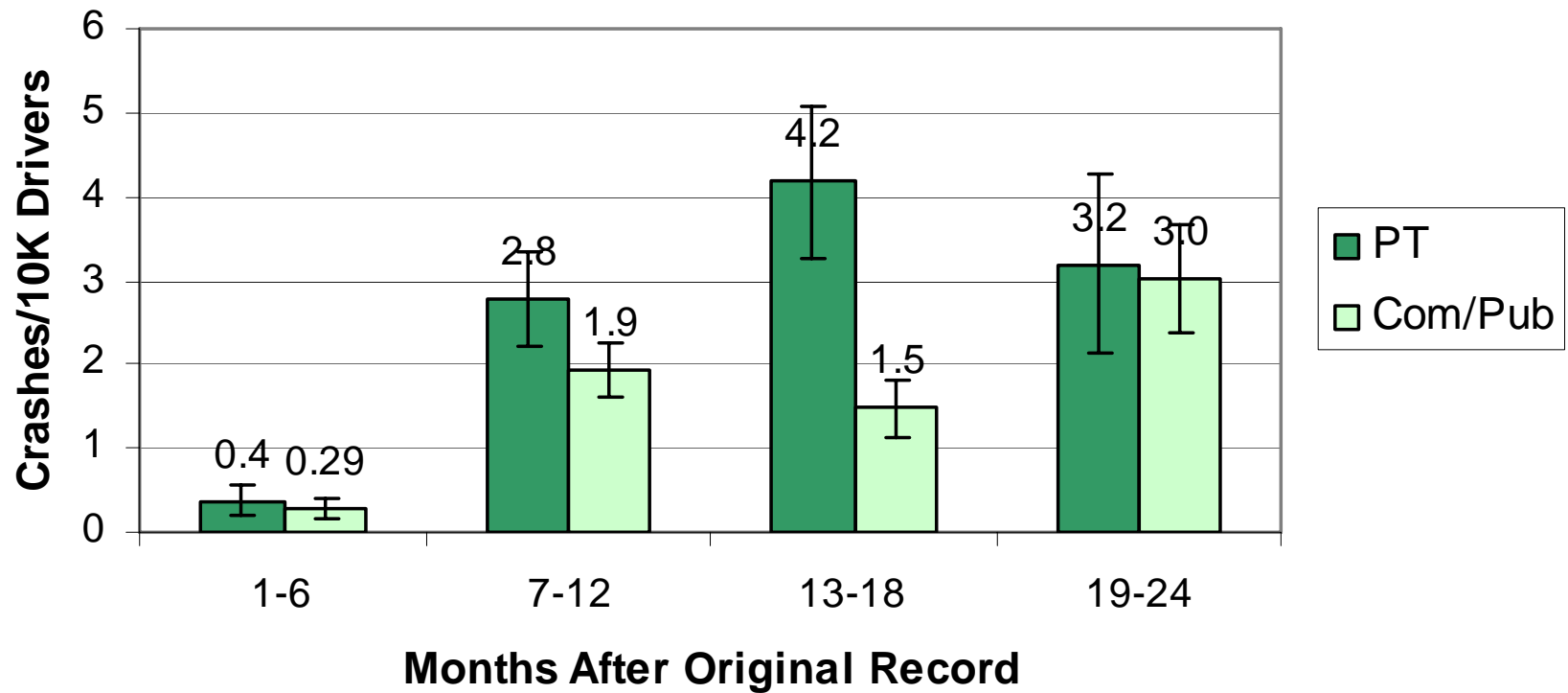
## Non-incapacitating injury crashes as a function of driver education mode: Post-GDL



## Incapacitating injury crashes as a function of driver education mode: Post-GDL

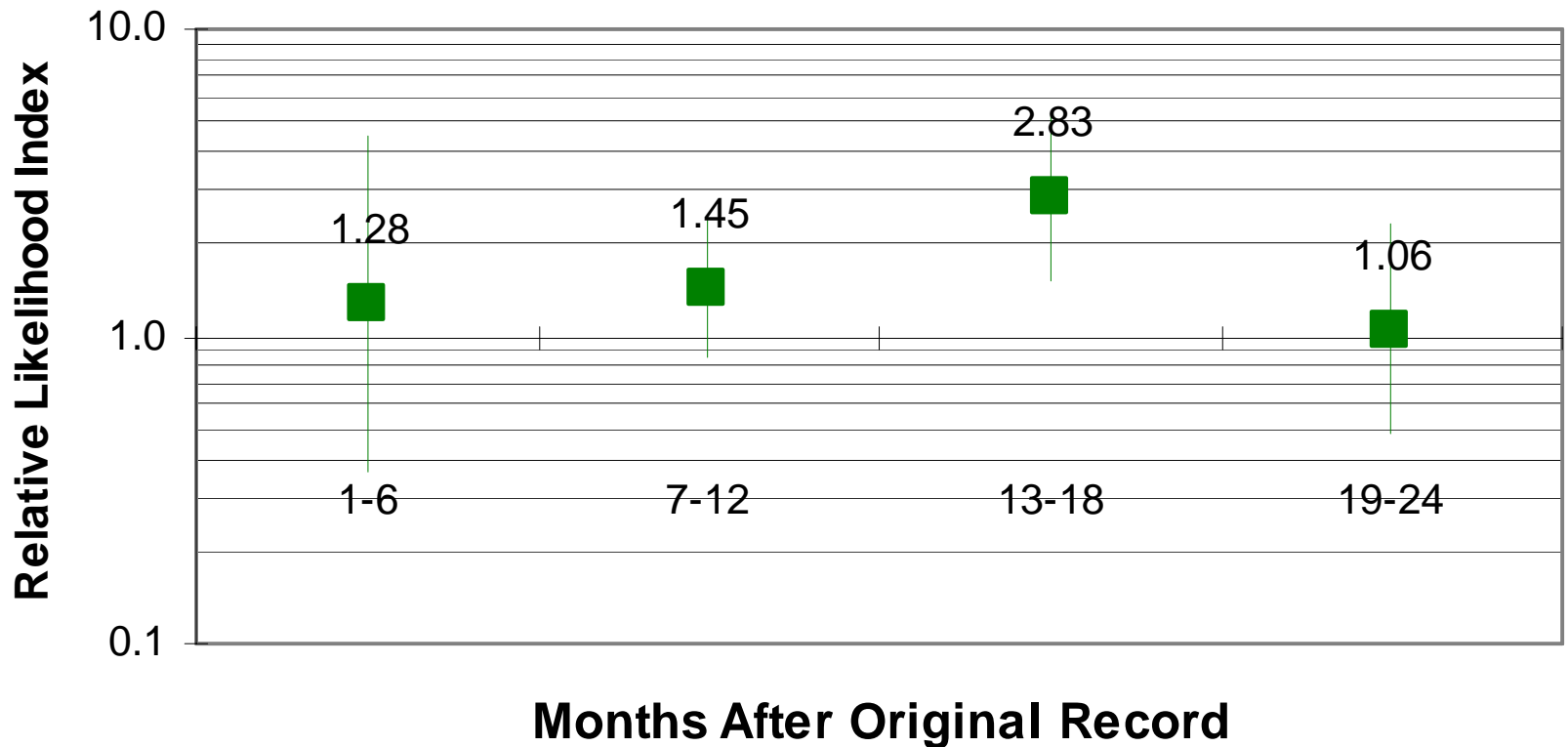


## Fatal crashes as a function of driver education mode: Post-GDL



# Likelihood of a crash involving Parent-taught relative to Com/Pub-taught drivers: Post-GDL

## Fatal Crashes



# Conclusions

- *Differences in age at licensing*
- *Differences in attitudes, knowledge & skills of novice drivers*
- *Differences in driving errors, traffic offences*
- *Differences in crash involvement.*

# Recommendations

- 1. Improve the criteria for parental participation in the parent-taught driver education program.***
- 2. Require at least some minimum training and/or testing for parents who want to teach their children to drive under the program.***

# Recommendations

- 3. Improve DPS monitoring of and accountability for the activities of the PT program.***
- 4. Reinstitute a requirement for an on-road driving assessment before granting a provisional and/or unrestricted license to novices under 18.***

**Has Texas gone too far in getting  
parents involved?**

**Taken the Wrong Path?**

**What's Needed?**

# To Obtain Full Report

Pezoldt, V. J., Womack, K. N. and Morris, D. E. (2007, April) *Parent taught driver education in Texas: A comparative evaluation*. Final Report to the National Highway Traffic Safety Administration, DOT Contract No. DTNH22-02-D-85121, Task Order 2. (DOT Report No. DOT HS 810 760). Washington, D.C.: NHTSA.

- Write to:  
The Office of Behavioral Safety Research  
NHTSA, NTI-130,  
400 Seventh Street SW.  
Washington, DC 20590
- Send a fax to:  
202-366-7096, or
- Download from: **[www.nhtsa.dot.gov](http://www.nhtsa.dot.gov)**  
Click on: **Teen Drivers**, then  
Click on: **New drivers**
- For two page summary:  
May 2007 NHTSA Traffic Tech Publication #328

# Questions - Discussion?

**Val Pezoldt**  
**Center for Transportation Safety**  
**Texas Transportation Institute**  
**v-pezoldt@tamu.edu**